

## INDUSTRY NEWS

**AIR VISE**  
&  
**WORKHOLDING**



# AUTOMATE YOUR SHOP'S PRODUCTION!

- AMERICAN-MADE PNEUMATIC VISE
- OD & ID CLAMPING CAPABILITIES
- QUICK-CHANGE JAW SYSTEM
- EASY COBOT INTEGRATION



### TABLE VISE

AV-T-4 | AV-T-6

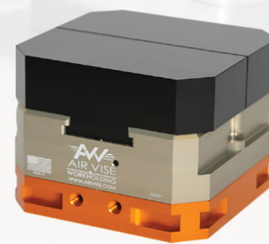
- **Material:**  
7075 Anodized Aluminum Body,  
17-4 SS Heat Treated Internal  
Components
- **Travel/Stroke:** .170"
- **Force:** 2,500 lbs at 100 psi
- **Port Locations:** Front
- **Mounting Holes:** 2 at 180°
- **Fixture Keys:** 5/8"
- **Jaws Included With Vise**



### ROTARY VISE

AV-R-4

- **Material:**  
7075 Anodized Aluminum Body,  
17-4 SS Heat Treated Internal  
Components
- **Travel/Stroke:** .170"
- **Force:** 2,500 lbs at 100 psi
- **Port Locations:** Front & Bottom
- **Mounting Holes:** 3 at 120°
- **Fixture Keys:** 9/16"
- **Jaws Included With Vise**



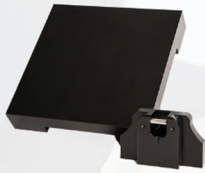
### ZERO-POINT VISE

AV-T-96MM

- **Material:**  
7075 Anodized Aluminum Body,  
17-4 SS Heat Treated Internal  
Components
- **Travel/Stroke:** .170"
- **Force:** 2,500 lbs at 100 psi
- **Port Locations:** Front
- **Mounting:** 96mm Zero Point
- **Fixture Keys:** 5/8"
- **Jaws Included With Vise**

## INDUSTRY NEWS

### GET A GRIP ON YOUR SHOP'S POTENTIAL!



#### PALLET KIT

##### AV-WH-PK

- Usable Space: 8" x 8" x 1"
- Materials: 7075 Aluminum
- Repeatability: Up to .0003"
- Quick-Change Jaws: No tools required
- Features: Converts your Table Vise into a Pallet



#### JAWS

Part Number	Vise Type	Jaw Width	Jaw Material
AV-T-J4	Table	4.00"	7075 AL
AV-T-J6	Table	6.00"	7075 AL
AV-R-J4	Rotary	4.00"	7075 AL
AV-R-J6	Rotary	6.00"	7075 AL
AV-T-SJ4	Table	4.00"	1018 Steel
AV-T-SJ6	Table	6.00"	1018 Steel

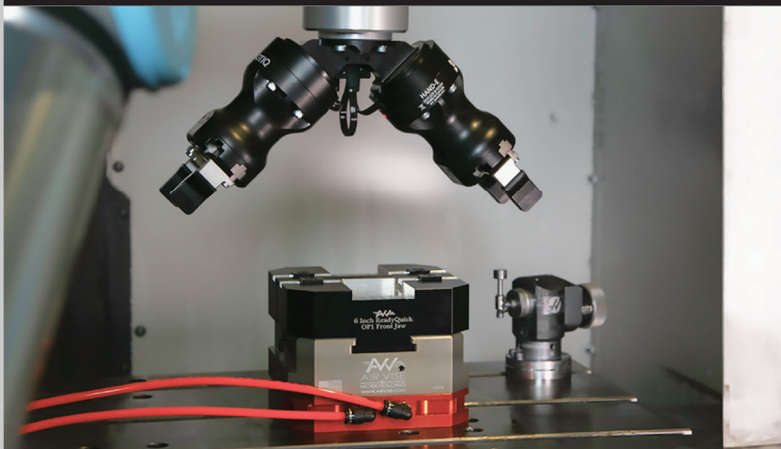
- Repeatability: Up to .001"
- Quick-Change Jaws: No tools required
- Throat Depth: 15/16"



#### ACCESSORIES

##### AND MORE

- Manual Operation Kit
- Solenoid Operation Kit
- Automation Packages
- Vise and Solenoid Kit Combo
- Vise Stop Blower Combo
- Adapter Plates



# AV

AIR VISE  
&  
WORKHOLDING